

PLAT NO. 39

BEING PARCEL NO. 43B

MARTIN DOWNS P.U.D.

LYING IN SECTION 13, TWP. 38S., RNGE. 40E.,
MARTIN COUNTY, FLORIDA

APRIL, 1988

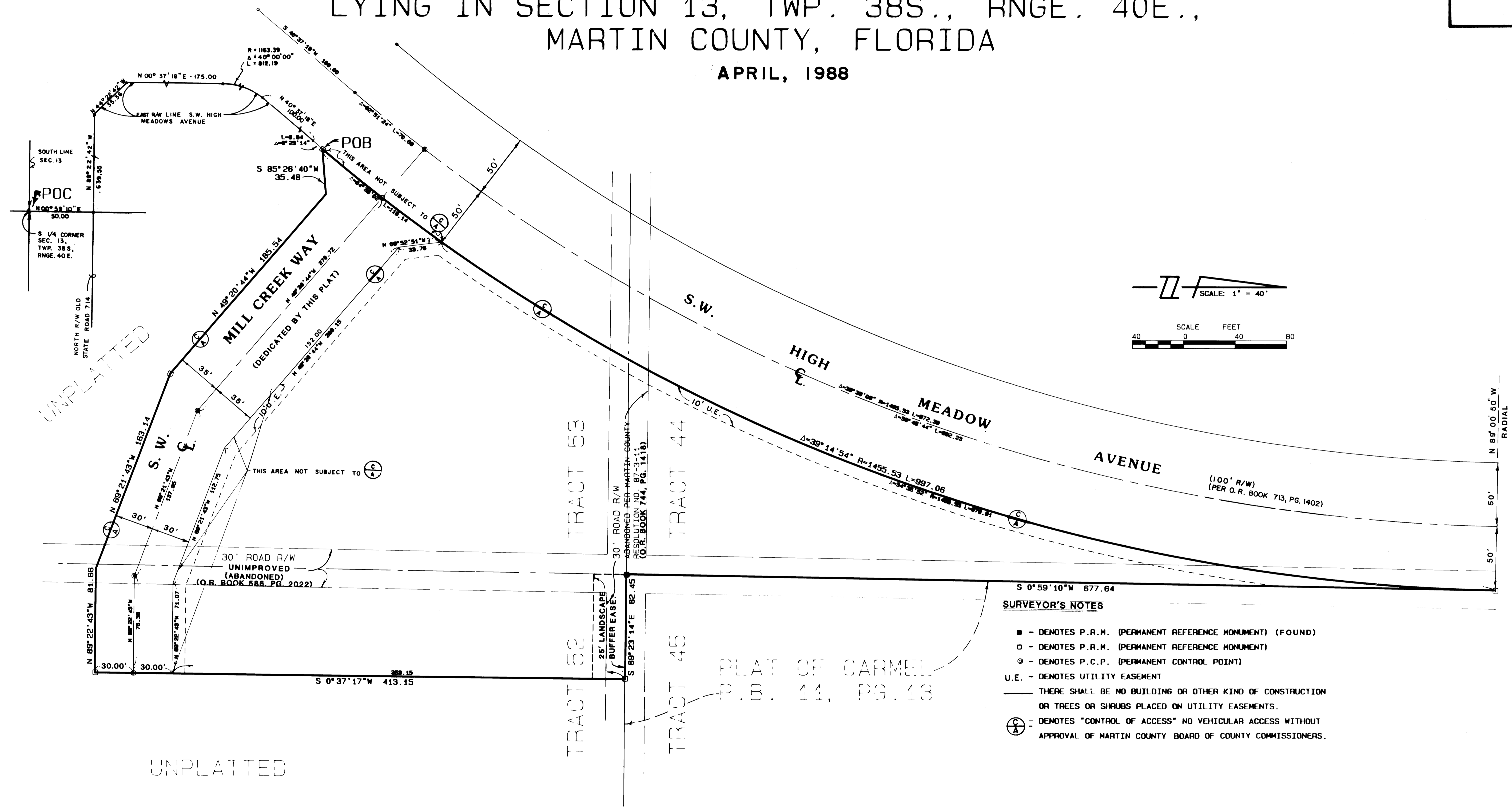
I, MARSHA STILLER, CLERK OF THE CIRCUIT COURT OF MARTIN COUNTY, FLORIDA, HEREBY CERTIFY THAT THIS PLAT WAS FILED FOR RECORD IN PLAT BOOK 11, PAGE 45, MARTIN COUNTY, FLORIDA, PUBLIC RECORDS, THIS --- DAY OF ---, 1988.

MARSHA STILLER, CLERK
CIRCUIT COURT MARTIN COUNTY, FLORIDA.

BY: _____
DEPUTY CLERK

FILE NO. _____

(CIRCUIT COURT SEAL)



- SURVEYOR'S NOTES**
- - DENOTES P.R.M. (PERMANENT REFERENCE MONUMENT) (FOUND)
 - - DENOTES P.R.M. (PERMANENT REFERENCE MONUMENT)
 - ⊙ - DENOTES P.C.P. (PERMANENT CONTROL POINT)
 - U.E. - DENOTES UTILITY EASEMENT
 - THERE SHALL BE NO BUILDING OR OTHER KIND OF CONSTRUCTION OR TREES OR SHRUBS PLACED ON UTILITY EASEMENTS.
 - ⊙ - DENOTES "CONTROL OF ACCESS" NO VEHICULAR ACCESS WITHOUT APPROVAL OF MARTIN COUNTY BOARD OF COUNTY COMMISSIONERS.

BEARING BASE:
NORTH RW LINE OLD S.R. 714 IS TAKEN TO BE N 89°22'42"W
AND ALL BEARINGS SHOWN HEREON ARE RELATIVE THERETO.

LINDAHL, BROWNING FERRARI & HELLSTROM, INC.
CONSULTING ENGINEERS, PLANNERS & SURVEYORS

PO BOX 227
JUPITER FLORIDA 33408

16 CENTRAL PARKWAY
SUITE 200
STUART FLORIDA 34997

1905 SOUTH 25TH STREET
SUITE 200
FORT PIERCE, FLORIDA 34940